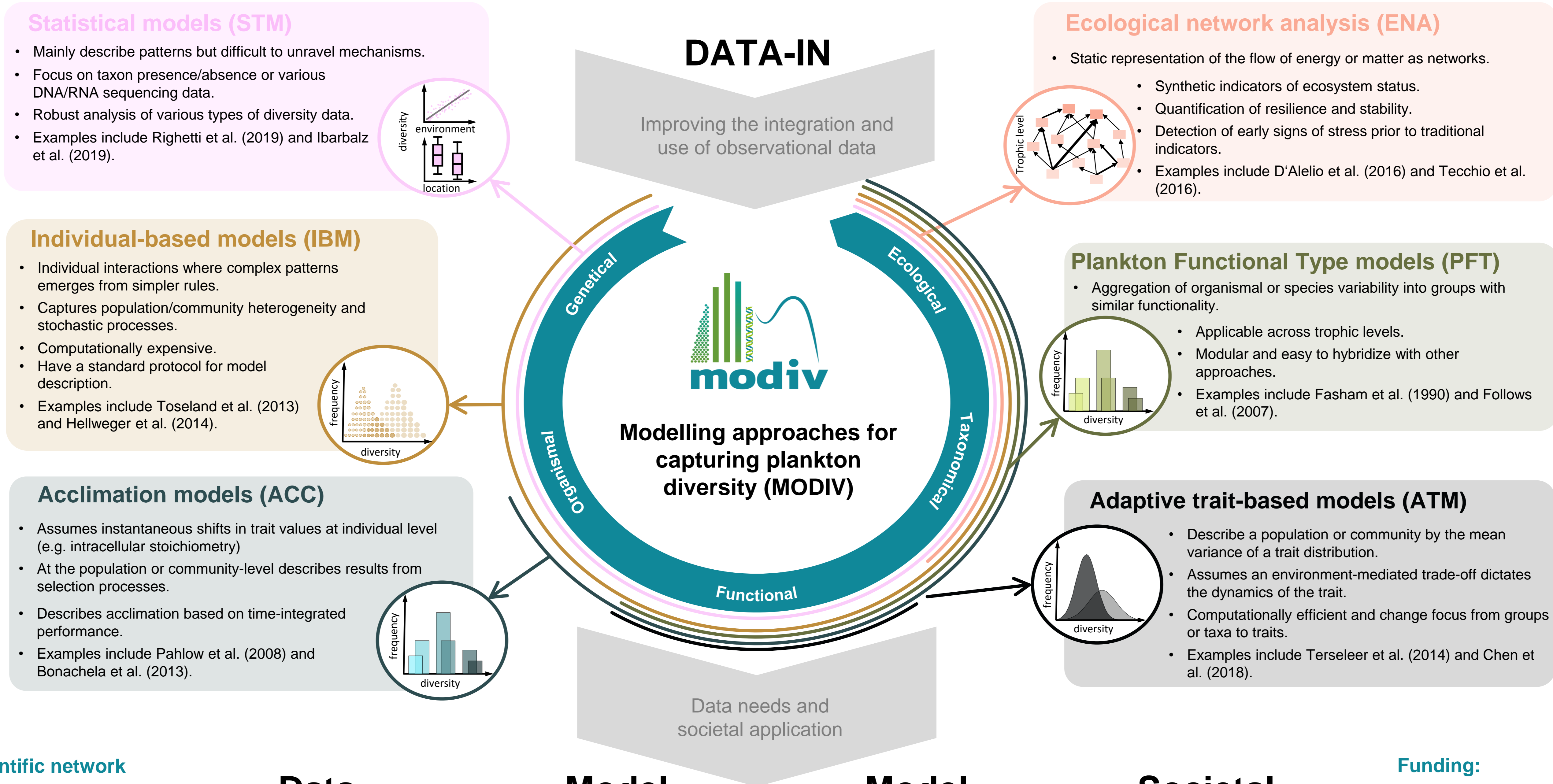


# Modelling approaches for capturing plankton diversity (MODIV) their societal applications and data needs

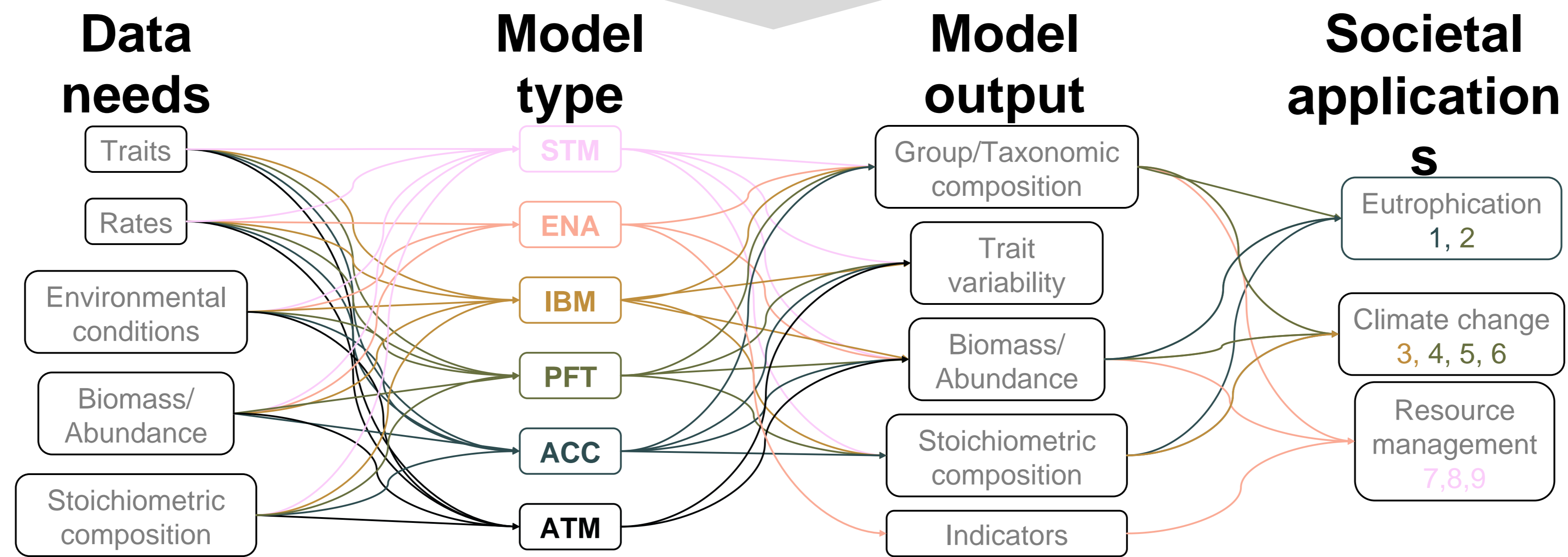
Esteban Acevedo-Trejos<sup>1</sup>, Subhendu Chakraborty<sup>2</sup>, Bingzhang Chen<sup>3</sup>, Isaac Cheung<sup>4</sup>, Maria Grigoratou<sup>5,14</sup>, Christian Guill<sup>6</sup>, Christiane Hassenrück<sup>7,8</sup>, Onur Kerimoglu<sup>9</sup>, Toni Klauschies<sup>6</sup>, Chris Lindemann<sup>10</sup>, Artur Palacz<sup>11</sup>, Alex Ryabov<sup>9</sup>, Marco Scotti<sup>12</sup>, Lan Smith<sup>13</sup>, Selina Våge<sup>10</sup>, Fi Prowe<sup>\*,12</sup>

Full publication in *Front. Mar. Sci.*  
doi: 10.3389/fmars.2022.975414

Website: <https://modiv.w.uib.no/>  
\*Contact: [fprowe@geomar.de](mailto:fprowe@geomar.de)  
[esteban.acevedo.trejos@gfz-potsdam.de](mailto:esteban.acevedo.trejos@gfz-potsdam.de)  
+Presenting author: [chris.lindemann@uib.no](mailto:chris.lindemann@uib.no)



## Member affiliations and scientific network



## Funding:



## References:

Bonachela et al. (2013) *Biogeosciences* 10, 4341–4356. doi:10.5194/bg-10-4341-2013.  
 Chen et al. (2018) *Geosci. Model Dev.* 11, 467–495. doi:10.5194/gmd-11-467-2018.  
 D'Alelio et al. (2016). *Sci. Rep.* 6, 1–13. doi:10.1038/srep21806.  
 Fasham et al. (1990) *J. Mar. Res.* 48, 591–639.  
 Follows et al. (2007). *Science* 315, 1843–1846. doi:10.1126/science.1138544.  
 Hellweger et al. (2014). *Science* 345, 1346–1349. doi:10.1126/science.1254421.  
 Ibarbalz et al. (2019). *Cell*. 179, 1084–1097.e21. doi:10.1016/j.cell.2019.10.008.  
 Pahlow et al. (2008) *Prog. Oceanogr.* 76, 151–191. doi:10.1016/j.pocean.2007.11.001.  
 Righetti et al. (2019). *Sci. Adv.* 5, 1–11. doi:10.1126/sciadv.aau6253.  
 Tecchio et al. (2016) *Ecol. Indic.* 61, 833–845. doi:10.1016/j.ecolind.2015.10.036.  
 Terseleer et al. (2014) *Limnol. Oceanogr.* 59, 1–16. doi:10.4319/lo.2014.59.6.0000.  
 1. Kerimoglu et al. (2018) *Sci. Total Environ.* 639, 1311–1323. doi: 10.1016/j.scitotenv.2018.05.215.  
 2. Lancelot et al. (2007) *J. Mar. Syst.* 64(1–4), 216–228. doi: 10.1016/j.jmarsys.2006.03.010.  
 3. Toseland et al. (2013) *Nat. Clim. Chang.* 3, 1–6. doi:10.1038/nclimate1989.  
 4. Kwiatkowski et al. (2018) *Glob. Biogeochem. Cycles.* 32, 516–528. doi.org/10.1002/2017GB005799.  
 5. Kwiatkowski et al. (2019) *Glob. Change Biol.* 25(1), 218–229. doi.org/10.1111/gcb.14468.  
 6. Henson et al. (2021). *Nat. Commun.* 12, 1–8. doi:10.1038/s41467-021-25699-w.  
 7. de la Vega et al. (2018). *Ocean Coast. Manag.* 163 401–416. doi:10.1016/j.ocecoaman.2018.07.019.  
 8. Meddeb et al. (2018). *Prog. Oceanogr.* 162, 66–82. doi:10.1016/j.pocean.2018.02.013.  
 9. Saint-Béa et al. (2020) *Elementa: Science of the Anthropocene* 8, 1. doi:10.1525/elementa.397.